

W16智能电子烟简易说明

尺寸: 72*127mm

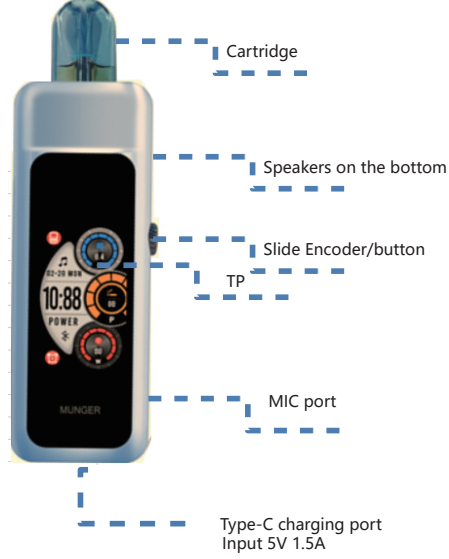
MUNGER

W16 Smart Electronic Cigarette Easy Description

Function:

- Adjustable Smoking Fire
- Connects to Bluetooth on cell phones
Talks and listens to music
- Synchronized with the App
Smoking Record Information
- Exchangeable cartridges,
recyclable

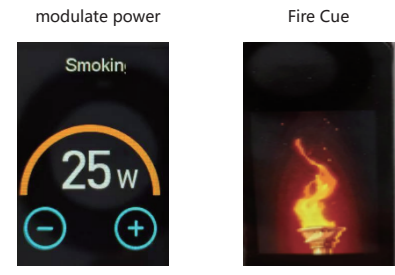
Power on: long press the button for 3 seconds the display has "MUNGER" Press 3 seconds to shut down!



Filling the cartridges: Unplug the oil change cap and fill the cartridges.
The oil cap is tightly pressed and flattened.
Silicone caps that are not pressed and flattened will not insert smoothly.



Smoking function:
1: will be added to the oil of the smoke bomb to be static for 5 minutes and other smoke oil completely Zhan into the inside before using
2: press the button once to open the screen saver will be the smoke Cartridge inserted into the machine will have a "click" a sound "inserted into the smoke bomb" prompts, reads normal.
3: Slide the screen to the left once there is smoking power to adjust the function, adjust + / - can adjust the level.



Bluetooth connection: press the button once to open the screen saver, in the screen to slide down, tap the Bluetooth icon once can open the Bluetooth function, open the phone to find W16 Audio click to enter the connection, after the connection to listen to music and call function.

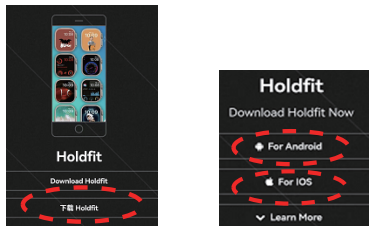


Install APP:Swipe left when the screen is on to find out QR code below to scan with your phone to download APP

For Android / For IOS

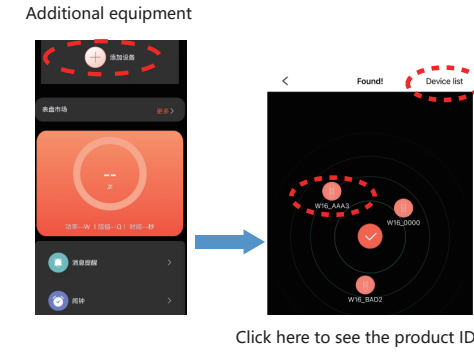


Install APP:Point to download, select For Android or For IOS according to the prompts
Installation is complete, in the process of pressing the installation prompts permissions are to be opened in order to use normally.



View smoking information in APP: In the cell phone add device click to enter, there will be a search to product ID, click on the corresponding ID can enter the connection.

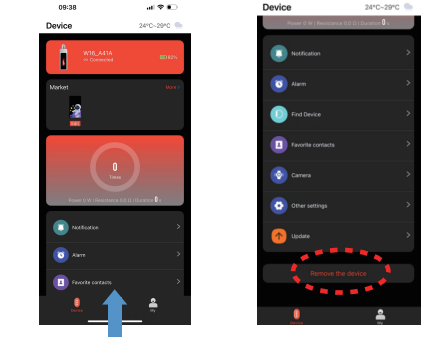
The product ID can be found by scrolling down the screen to as shown below Or click on "Device List" to search for it



Click here to see the product ID



The APP can only connect to one product. To connect to a second product, you need to "delete device" on the APP before you can connect to another product



Pull up to the end of this screen and click 'Delete the Device'